

Title:
ListWinPEVariables

Overview and guide

History

Version	State/Change	Date	Author
1.0	First release	04/02/2020	Alétheia Sophia da Silva Ramos, Daniel Gies, Jochen Schmitt
1.1	Fixes including text and images	04/06/2020	Alétheia Sophia da Silva Ramos, Jochen Schmitt
1.2	Update for Release 1.3	11/08/2020	Jochen Schmitt
1.3	Update for Release 1.4	10/26/2021	Jochen Schmitt

1 Table of content

2	Introduction.....	4
3	Installation.....	4
4	Import of PreOS packages.....	4
4.1	Sequence and dependencies.....	5
5	Assignment.....	5
6	Output.....	5
7	Configuration options.....	5
7.1	Display output in PXE-Log.....	5
7.2	Show all variables from input file.....	7
7.3	Customizing of output/variables.....	8
8	Sample output.....	9
8.1	PXE-Log.....	9
8.2	Log-file.....	9
9	Changelog of ListWinPEVariables.....	11

2 Introduction

With the help of the Empirum WinPE Extension 'ListWinPEVariables', you are able to list the used variables and their values to a logfile and if desired, you can write these also to the PXE-Log.

During the WinPE installation step, the relevant values will be determined and written to a logfile. This file will be copied to the WinPEStatus folder, like all the other WinPE logfiles as well.

You can decide, if these values shall be added to the PXE.Log also. The variables to be processed can be customized in a text file.

Thus new values which are coming with new WinPE functions can be added by yourself. Alternatively you can also delete irrelevant values from the Logging.

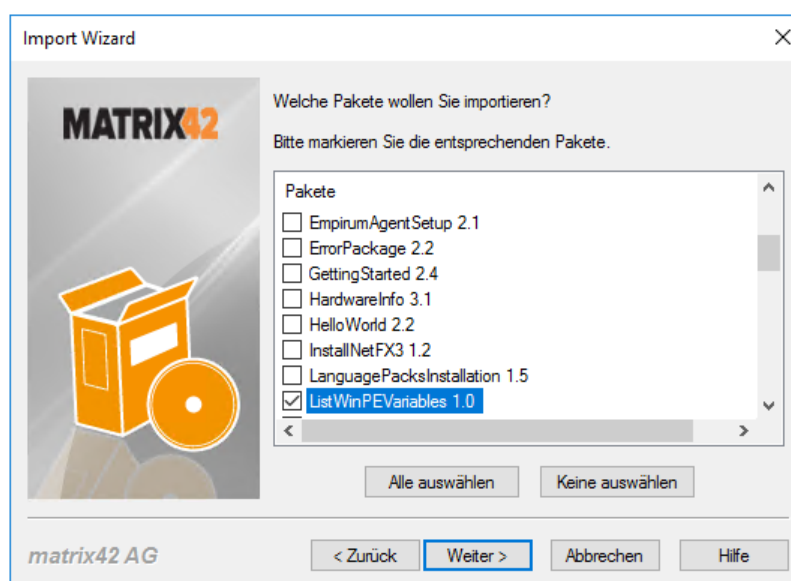
3 Installation

The included ZIP file contains an unpacked Empirum structure like the Empirum WinPE AddOn. This Empirum structure has to be copied in the existing Empirum structure on the EmpirumServer. This places the WinPE package in the PackageStore folder and is ready to get imported.

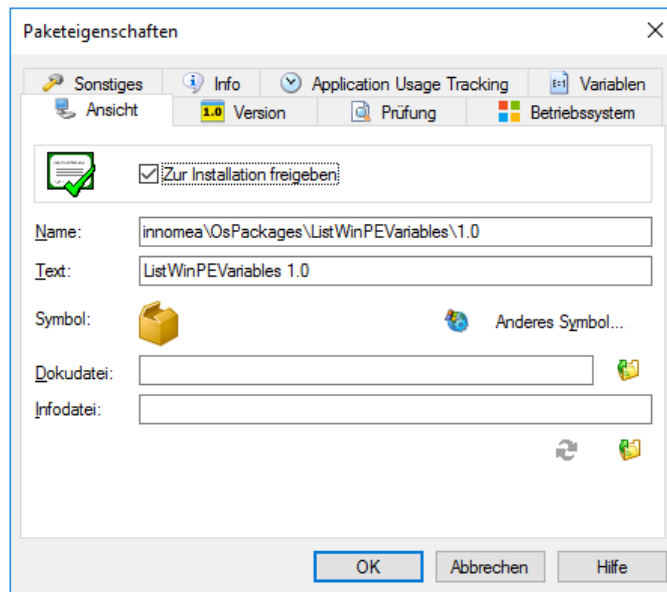
4 Import of PreOS packages

With the previous steps you prepared the package files for the import process to the Empirum structure and database. In addition, you must import the package using the Management Console to be prepared for distribution. If this topic is new for you, you can grab helpful instructions from the [Step by step Guide](#) on help.matrix42.com.

During the Import Wizard choose 'ListWinPEVariables' from the list and activate this package for distribution. The two following figures show what is important during and after the import. Please note that the available version may be higher than the one shown here.



1 – Selection window from the Import Wizard (preferably use 'select none' before proceeding)



2 -Package properties: 'release for installation'

4.1 Sequence and dependencies

Because the arrangement of the WinPE packages is affecting the installation sequence, you must arrange them in the right order. ListWinPEVariables can be arranged as the first package before 'DiskPartitioning' or as the last package, but in this case before 'EmpirumAgentSetup'.

5 Assignment

Now you need to assign the package to a configuration- or assignment groups in which the OS installation will be done using WinPE.

6 Output

ListWinPEVariables uses the settings of the WinPE installation to create a logfile which can be found in **Fehler! Linkreferenz ungültig.**

The variables that are listed in this logfile can be customized by personal preferences. If you want to, you can add additional or delete existing variables.

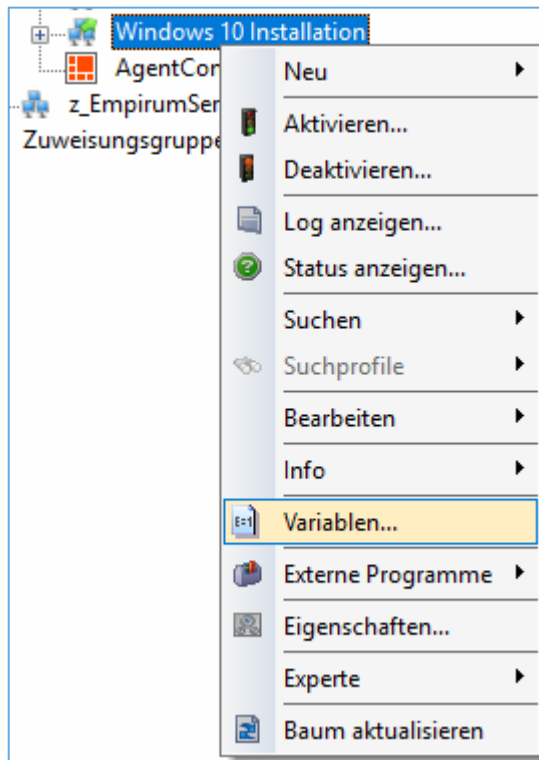
In addition the version of assigned Windows sources gets determined. So at this point an update of this package can be mandatory in the future.

7 Configuration options

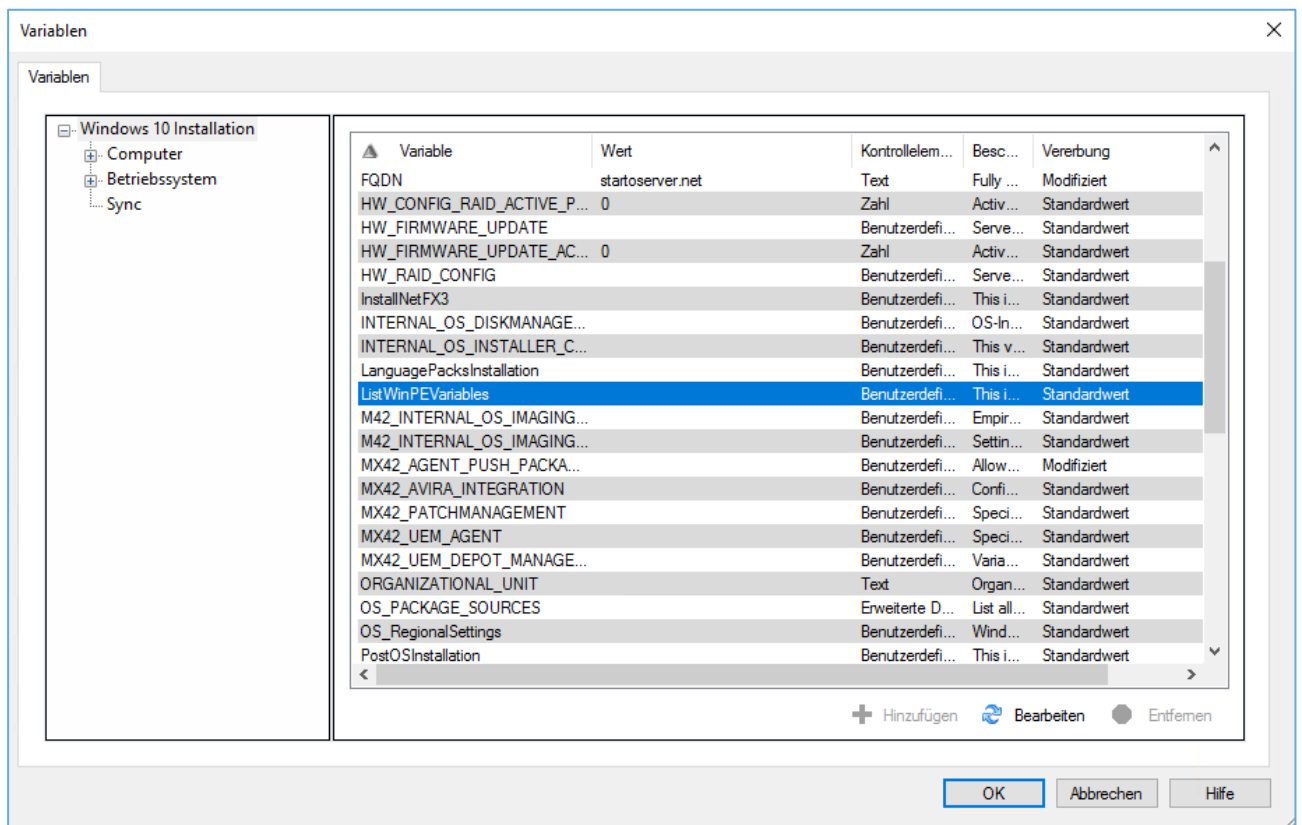
7.1 Display output in PXE-Log

As mentioned before, the output of the variables can additionally take place in the PXE-log. If this package is assigned to a configuration- or assignment group the variables group 'ListWinPEVariables' becomes available to the group or their included computers.

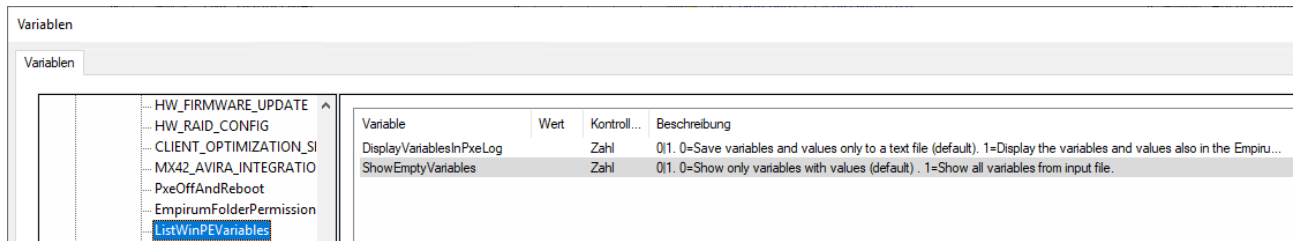
Below are the needed steps to change the values of the variables to display the variables in the PXE-log.



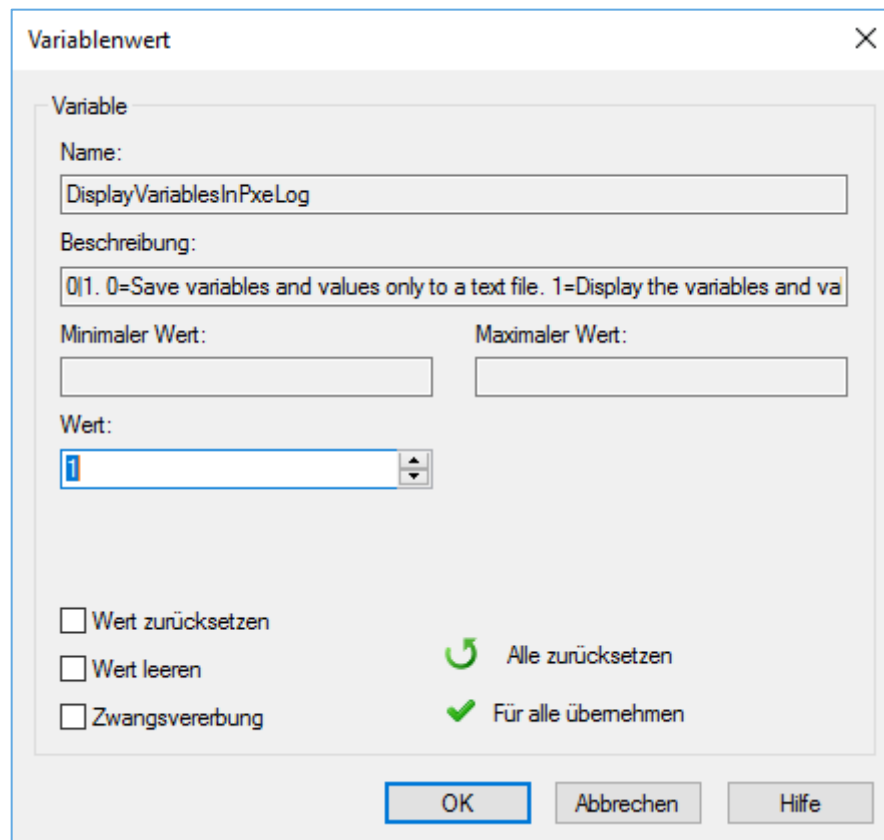
3 – Access to the variables tab that can be found in the configuration- or assignment group in which the package is assigned to.



4 – ListWinPEVariables in the context menu of its configuration- or assignment group.



5 – The configuration is made possible within the DisplayVariablesInPxeLog variable.



6 – If you set the value to 0 the logfile will only be created in the WinPEstatus folder. Otherwise if you set it to 1 the variables will be shown additionally in the PXE-Log.

7.2 Show all variables from input file

By default only variables with values will be logged or send to the PXE-Log. By setting the variable “ShowEmptyVariables” to 1, all variables from the input file will be logged or send to the PXE-Log.

The screenshot shows a dialog box titled 'Variablenwert'. It has a 'Variable' section with the following fields: 'Name' (containing 'ShowEmptyVariables'), 'Beschreibung' (containing '0|1. 0=Show only variables with values (default) . 1=Show all variables from input fil'), 'Minimaler Wert' (empty), 'Maximaler Wert' (empty), and 'Wert' (empty). Below these are two checkboxes: 'Wert zurücksetzen' (unchecked) and 'Wert leeren' (checked). At the bottom are three buttons: 'OK', 'Abbrechen', and 'Hilfe'.

7 - By default only variables with values will be saved. Setting this value to 1 will save all variables to the log file.

7.3 Customizing of output/variables

The output will be specified through the variables and values. To guarantee flexibility for this package, the variables which needs to get determined will be managed through a separate text file.

This package tries to read the variable values. If the variable cannot be determined, there is no error in the output.

You got the following possibilities:

- New variables that are needed can be added, because of newer WinPE PreOS packages and possibilities.
- Unwanted variables can be deleted.

Especially the latter possibility can be useful if you want to display the output in the PXE-log.

This file containing the variables to be processed is named 'Variables2Process.txt'.

It can be found under the installation path of the ListWinPEVariables package:

(\\%EmpirumServer%\configurator\$\Packages\INNOMEA\OsPackages\ListWinPEVariables\<Version>\Variables2Process.txt).

8 Sample output

8.1 PXE-Log

Log für Computer: LABPC001

SWDepot-Log (100) PM-Log Error-Log **PXE-Log (100)** Agent Push-Log Device Discovery-Log Disk Imaging Log Personal Backup-Log Empirum Server Monitor

Log-Zeitpunkt	Meldung
21.02.2020 16:05:25	[PEAgent] [WinPE] Finished execution of Demo \OsPackages>ListWinPEVariables\1.0 package.
21.02.2020 16:05:24	[PEAgent] [WinPE] Windows Version=1607
21.02.2020 16:05:24	[PEAgent] [WinPE] Windows Setup.exe Version=10.0.14393.0
21.02.2020 16:05:24	[PEAgent] [WinPE] MX42_AGENT_PUSH_PACKAGE_FOLDER.WINDOWS=UEM Agent Windows1912.0
21.02.2020 16:05:24	[PEAgent] [WinPE] DomainJoin.DomainJoinAuthority=AD
21.02.2020 16:05:24	[PEAgent] [WinPE] DomainJoin.DomainJoinErrorAction=Error
21.02.2020 16:05:24	[PEAgent] [WinPE] DomainJoin.DomainJoinCredentialsUser= Demo \svc-empagent
21.02.2020 16:05:24	[PEAgent] [WinPE] MX42_INTERNAL_OS_IMAGE.INDEX=1
21.02.2020 16:05:24	[PEAgent] [WinPE] MX42_INTERNAL_OS_IMAGE.PATH=Sys\win10\amd64\pro\X_XXXXXXXX-XXXX-XXXX-XXXX-XXX... \de-DE
21.02.2020 16:05:24	[PEAgent] [WinPE] MX42_INTERNAL_OS_IMAGE.OSTYPE=pro
21.02.2020 16:05:24	[PEAgent] [WinPE] MX42_INTERNAL_OS_IMAGE.OS=win10
21.02.2020 16:05:24	[PEAgent] [WinPE] MX42_INTERNAL_OS_IMAGE.LANGUAGE=de-DE
21.02.2020 16:05:24	[PEAgent] [WinPE] MX42_INTERNAL_OS_IMAGE.ARCHITECTURE=x64
21.02.2020 16:05:24	[PEAgent] [WinPE] MX42_INTERNAL_OS_IMAGE.EDITION=Windows 10 Enterprise 2016 LTSB
21.02.2020 16:05:24	[PEAgent] [WinPE] OS_PACKAGE_SOURCES=
21.02.2020 16:05:24	[PEAgent] [WinPE] OS_RegionalSettings.TimeZone=W. Europe Standard Time
21.02.2020 16:05:24	[PEAgent] [WinPE] WindowsInstallation.UnattendXmlFile=
21.02.2020 16:05:24	[PEAgent] [WinPE] WindowsInstallation.BuiltinAdministratorActive=No
21.02.2020 16:05:24	[PEAgent] [WinPE] WindowsInstallation.UACLevel=2
21.02.2020 16:05:23	[PEAgent] [WinPE] WindowsInstallation.ActivationNow=
21.02.2020 16:05:23	[PEAgent] [WinPE] WindowsInstallation.ActivationKey= XXXXX-XXXXX-XXXXX-XXXXX-XXXXX
21.02.2020 16:05:23	[PEAgent] [WinPE] WindowsInstallation.ProductKey=
21.02.2020 16:05:23	[PEAgent] [WinPE] WindowsInstallation.UserLocale=de-DE
21.02.2020 16:05:23	[PEAgent] [WinPE] WindowsInstallation.UILanguage=de-DE
21.02.2020 16:05:23	[PEAgent] [WinPE] WindowsInstallation.SystemLocale=de-DE
21.02.2020 16:05:23	[PEAgent] [WinPE] WindowsInstallation.InputLocale=de-DE
21.02.2020 16:05:23	[PEAgent] [WinPE] WindowsInstallation.SetupUILanguage=de-DE
21.02.2020 16:05:23	[PEAgent] [WinPE] WindowsInstallation.LocalUserDisplayName=Demo
21.02.2020 16:05:23	[PEAgent] [WinPE] WindowsInstallation.LocalUserName=Demo
21.02.2020 16:05:23	[PEAgent] [WinPE] PrepareDRVbyModel_Packages.AssignedModel= User
21.02.2020 16:05:23	[PEAgent] [WinPE] PrepareDRVbyModel_Packages.AssignedManufacturer= Demo
21.02.2020 16:05:23	[PEAgent] [WinPE] PrepareDRVbyModel_Packages.DriversRootPath=Drivers
21.02.2020 16:05:23	[PEAgent] [WinPE] PrepareDRVbyModel_Packages.DriversINIPath=
21.02.2020 16:05:23	[PEAgent] [WinPE] PrepareDRVbyModel_Packages.DriversAreMandatory=0
21.02.2020 16:05:23	[PEAgent] [WinPE] DiskPartitioning.SizeWinREPartitionInMB=300
21.02.2020 16:05:23	[PEAgent] [WinPE] DiskPartitioning.SizeMsrPartitionInMB=128
21.02.2020 16:05:23	[PEAgent] [WinPE] DiskPartitioning.SizeEfiPartitionInMB=100
21.02.2020 16:05:23	[PEAgent] [WinPE] DiskPartitioning.ClearAllDisks=
21.02.2020 16:05:23	[PEAgent] [WinPE] DiskPartitioning.PreferFastDisk=1
21.02.2020 16:05:23	[PEAgent] [WinPE] DiskPartitioning.SizeDataPartition=0
21.02.2020 16:05:23	[PEAgent] [WinPE] DiskPartitioning.MinimumSystemPartitionSizeInGB=
21.02.2020 16:05:23	[PEAgent] [WinPE] DiskPartitioning.SizeSystemPartition=100
21.02.2020 16:05:23	[PEAgent] [WinPE] DiskPartitioning.InterpretSizeInputAsPercentage=1
21.02.2020 16:05:23	[PEAgent] [WinPE] ORGANIZATIONAL_UNIT=OU=Prod,OU=20-Computer,DC= Demo .DC=loc
21.02.2020 16:05:23	[PEAgent] [WinPE] FQDN= Demo.loc

Nur Zeilen Anzahl der Zeilen speichern

8 - PXE-log with shown variables of the ListWinPEVariables 1.0 package.

8.2 Log-file

```
Computername=LABPC001
Domain=Demo
FQDN=Demo.loc
ORGANIZATIONAL_UNIT=OU=Prod,OU=20-Computer,DC=Demo,DC=loc
DiskPartitioning.InterpretSizeInputAsPercentage=1
DiskPartitioning.SizeSystemPartition=100
DiskPartitioning.MinimumSystemPartitionSizeInGB=
DiskPartitioning.SizeDataPartition=0
DiskPartitioning.PreferFastDisk=1
DiskPartitioning.ClearAllDisks=
DiskPartitioning.SizeEfiPartitionInMB=100
DiskPartitioning.SizeMsrPartitionInMB=128
DiskPartitioning.SizeWinREPartitionInMB=300
PrepareDRVbyModel_Packages.DriversAreMandatory=0
PrepareDRVbyModel_Packages.DriversINIPath=
PrepareDRVbyModel_Packages.DriversRootPath=Drivers
PrepareDRVbyModel_Packages.AssignedManufacturer=Demo
PrepareDRVbyModel_Packages.AssignedModel=User
WindowsInstallation.LocalUserName=Demo
WindowsInstallation.LocalUserDisplayName=Demo
WindowsInstallation.SetupUILanguage=de-DE
WindowsInstallation.InputLocale=de-DE
WindowsInstallation.SystemLocale=de-DE
WindowsInstallation.UILanguage=de-DE
WindowsInstallation.UserLocale=de-DE
WindowsInstallation.ProductKey=XXXXXX-XXXXXX-XXXXXX-XXXXXX-XXXXXX
WindowsInstallation.ActivationKey=
WindowsInstallation.ActivationNow=
WindowsInstallation.UACLevel=2
WindowsInstallation.BuiltinAdministratorActive=No
WindowsInstallation.UnattendXmlFile=
OS_RegionalSettings.TimeZone=W. Europe Standard Time
OS_PACKAGE_SOURCES=
MX42_INTERNAL_OS_IMAGE.EDITION=Windows 10 Enterprise 2016 LTSC
MX42_INTERNAL_OS_IMAGE.ARCHITECTURE=x64
MX42_INTERNAL_OS_IMAGE.LANGUAGE=de-DE
MX42_INTERNAL_OS_IMAGE.OS=win10
MX42_INTERNAL_OS_IMAGE.OSTYPE=pro
MX42_INTERNAL_OS_IMAGE.PATH=Sys\win10\x64\pro\X_XXXXXXXX-XXXX-XXXX-XXXX-XXXXXXXXXXXX\de-DE
MX42_INTERNAL_OS_IMAGE.INDEX=1
DomainJoin.DomainJoinCredentialsUser=Demo.loc\svc-empagent
DomainJoin.DomainJoinErrorAction=Error
DomainJoin.DomainJoinAuthority=AD
MX42_AGENT_PUSH_PACKAGE_FOLDER.WINDOWS=UEM Agent Windows\1912.0
Windows Setup.exe Version=10.0.14393.0
Windows Version=1607
```

8 – Example of a log file output with variables from the ListWinPEVariables 1.0 package

9 Changelog of ListWinPEVariables

Version	Comment
1.0	Initial release
1.1	Expansion to Windows 10 2020H1
1.4	Expansion of the Variables2Process.txt. Detection of new Windows Versions.